

# Contextual data for policy-relevant research: The PERFAR data portal

Diana López-Falcón – Lopez@demogr.mpg.de  
Population Europe / Max Planck Institute for Demographic Research



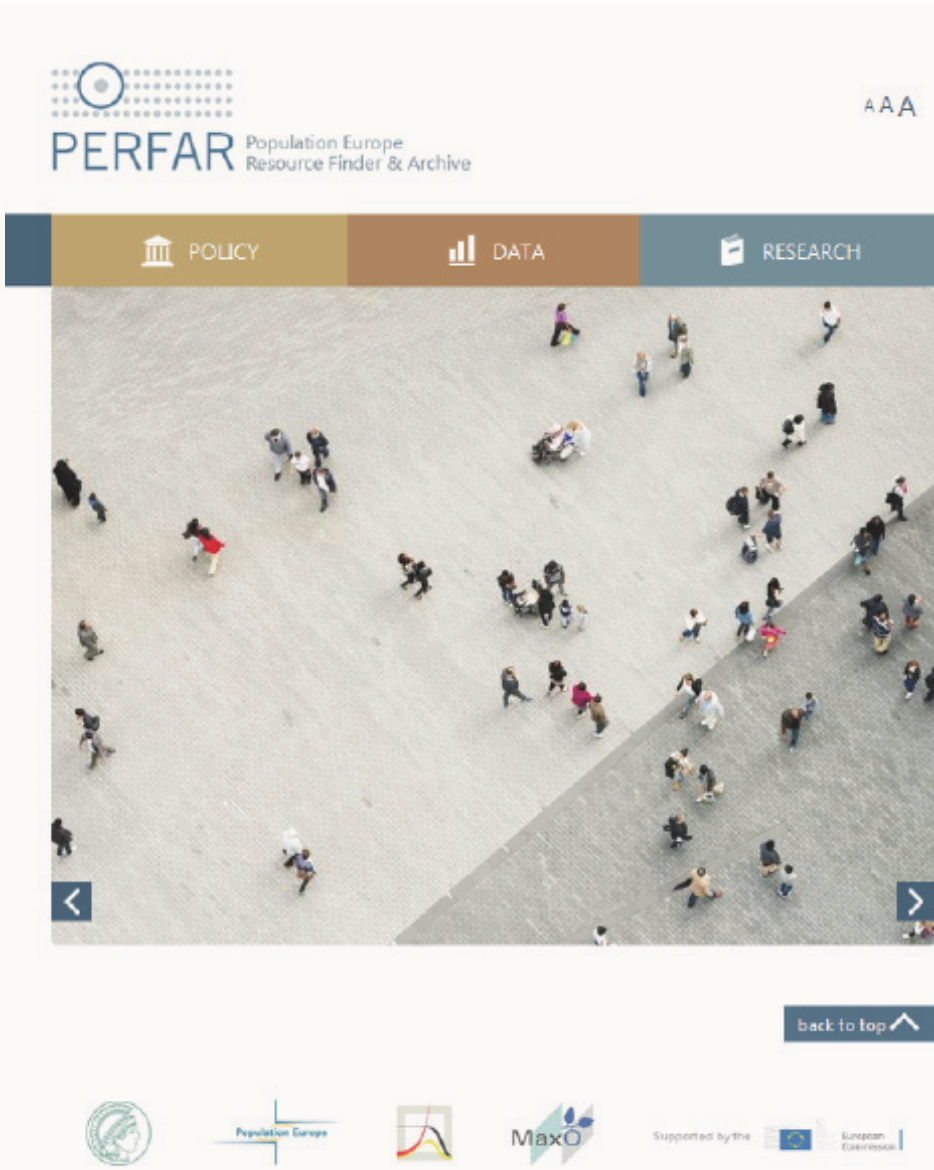
## Introduction

What are the policies designed to address population change in Europe, and how do these policies work within modern societies?

The Population Europe Resource Finder and Archive (PERFAR) is a tool which allows the user to explore the linkages between policies and population developments. It builds upon its predecessor, the Population and Policy Database (PPD) that was conceived as a tool for studying the interrelations between demography and social policy.

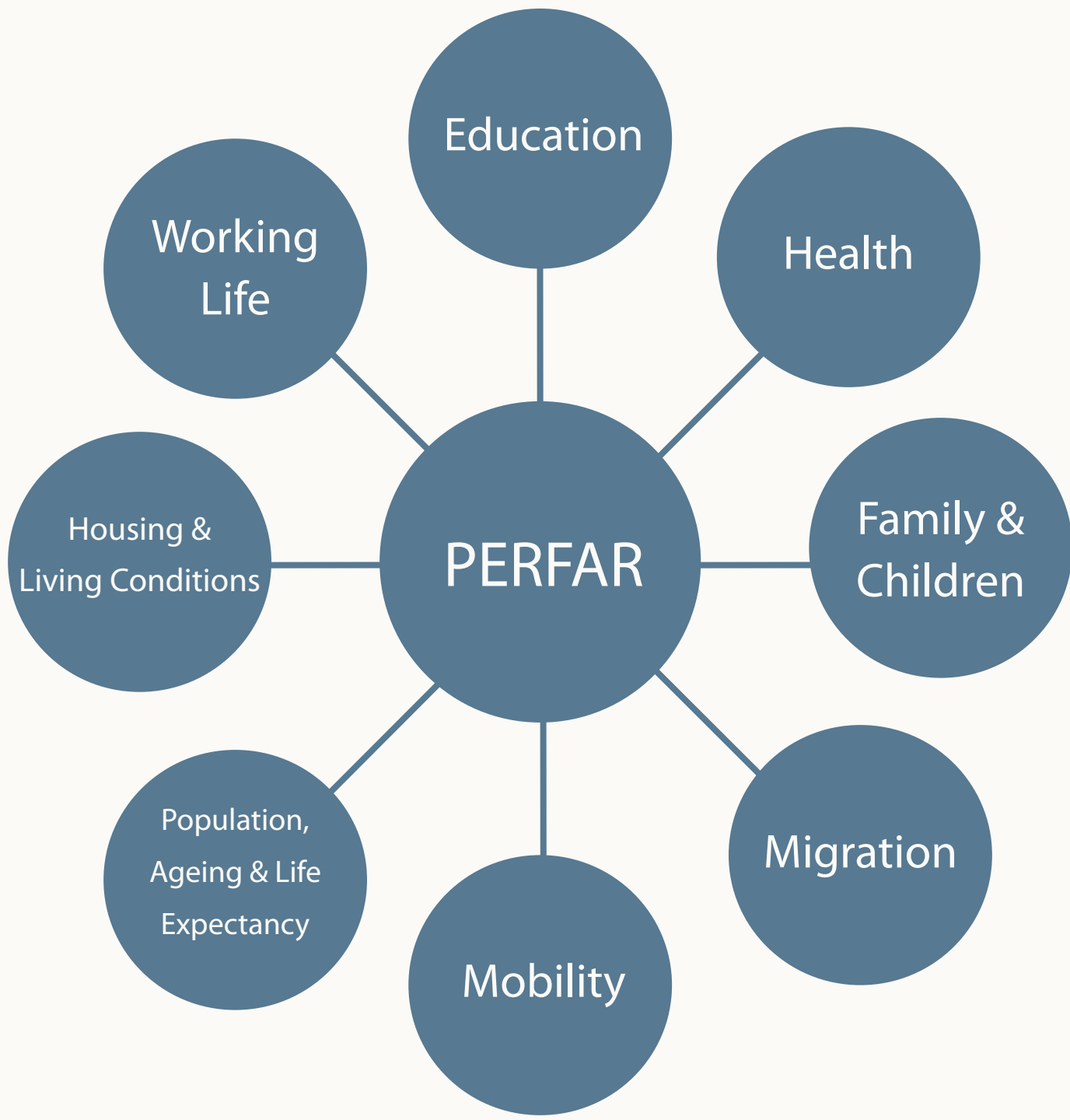
The Scientific Advisory Board of PERFAR regularly oversees the activities of the portal and is comprised of:

- Antoine Bozio
- Vladimir Canudas-Romo
- Pearl A. Dykstra
- Rory Fitzgerald
- Alexia Fűrnkranz-Prskawetz
- Anne H. Gauthier
- Anne Goujon
- Robert Holzmann
- Giampaolo Lanzieri
- Olivier Thévenon
- Frans J. Willekens



## Concept

In terms of coverage, PERFAR is focused on resources covering European countries based on time, space and context, and are organised by the following topics:

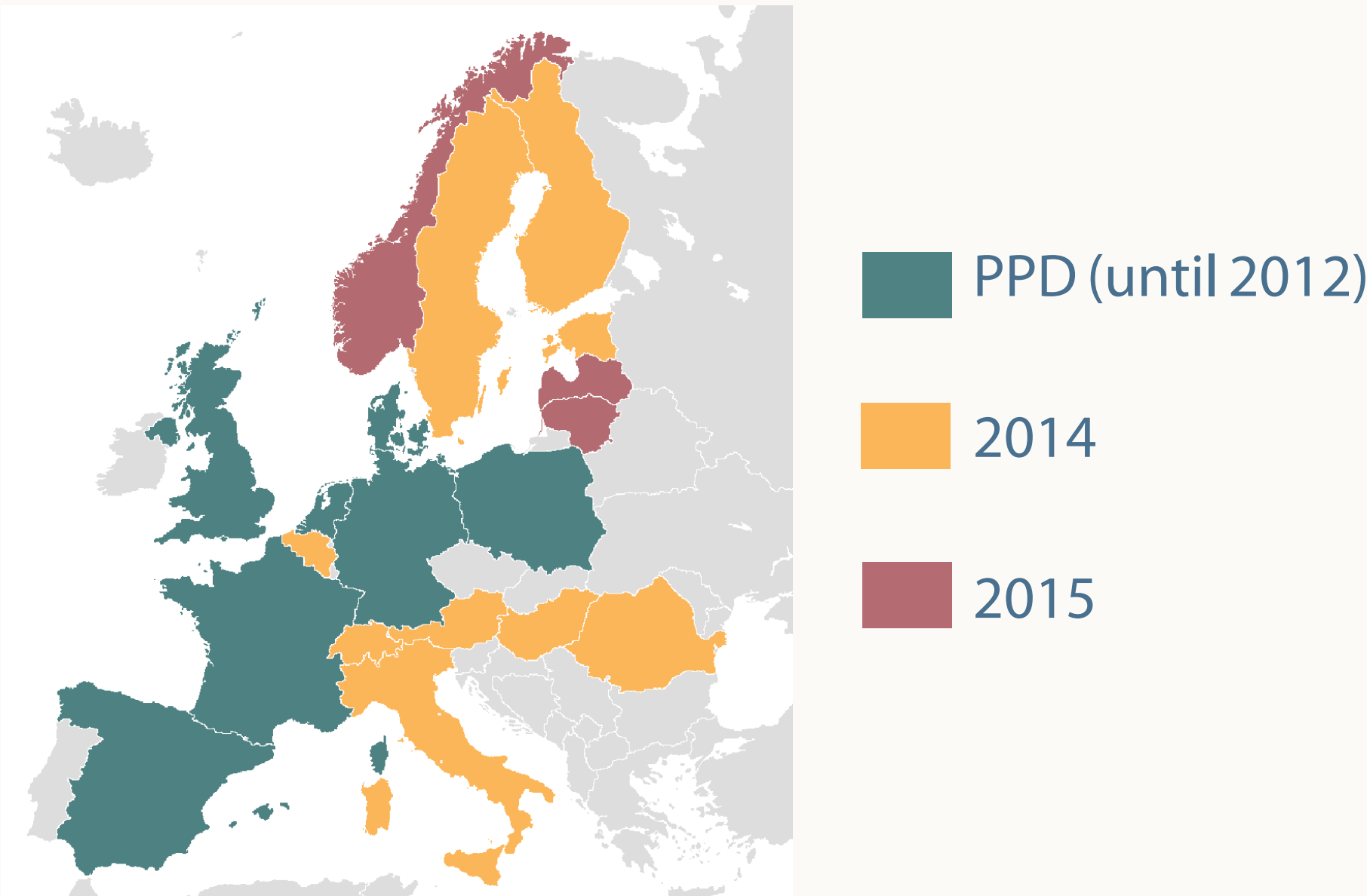


## Structure



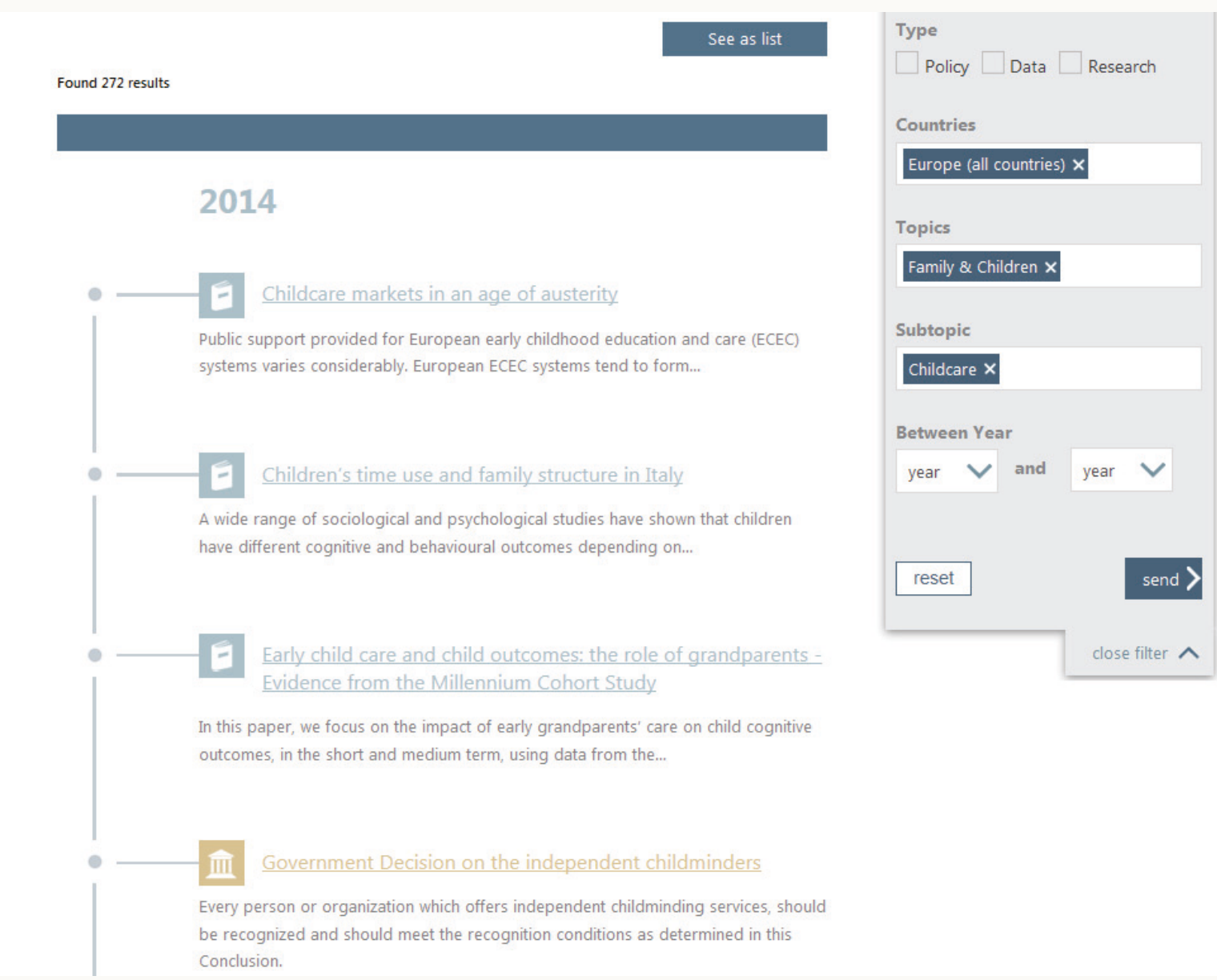
PERFAR provides access to a unique collection of more than 2,000 legal documents supporting demography-relevant socioeconomic policies across Europe, as well as policy descriptions in the fields of family, education, migration, health and work.

The Policy section offers laws and norms for up to 19 European countries dated as early as 1580.



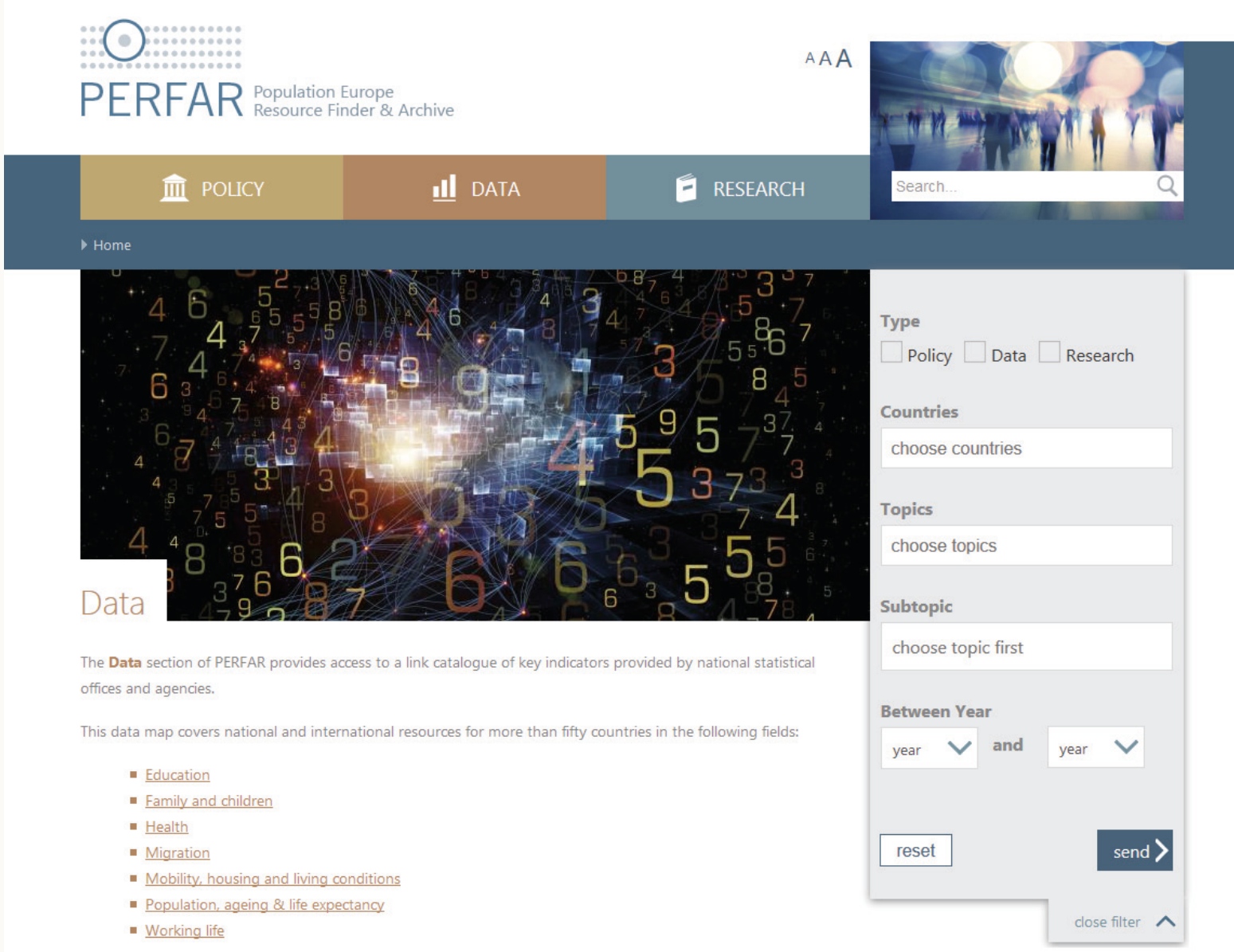
Countries covered by the Policy section of PERFAR, by year of inclusion

The new timeline function of PERFAR makes it easy to depict and compare the implementation of social policies over time.



PERFAR now offers a unique collection of links to socioeconomic and demographic data, and indicators for policy-related research.

The Data section gives access to key data sources developed by 28 European National Statistical Offices, as well as international organisations and providers.

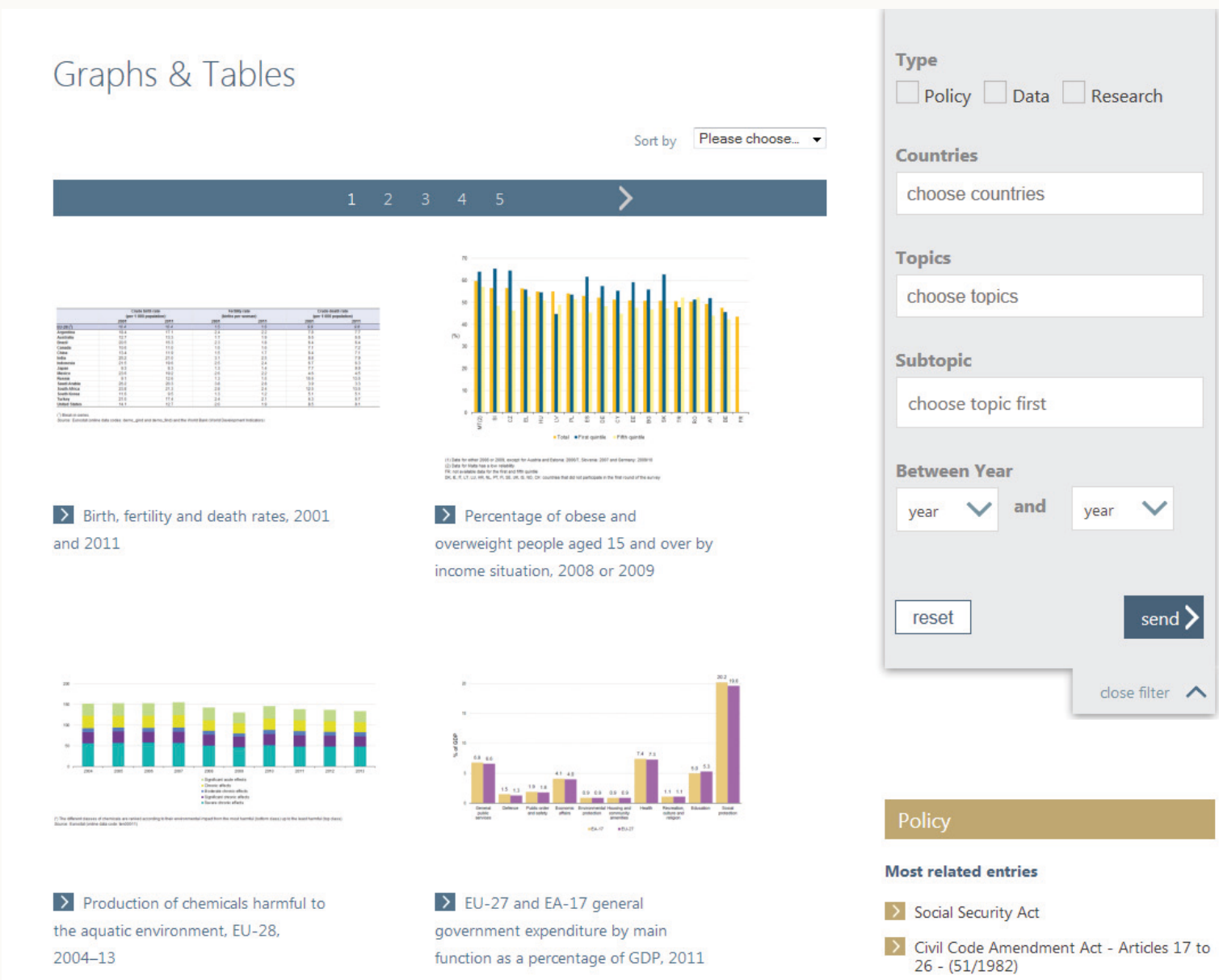


The portal includes a research repository of the most recent published outcomes and makes it easy to find key graphs and tables from diverse data providers.



## Graphs & Tables

In addition, PERFAR makes it easy to find key graphs and tables from diverse data providers.



## Collaboration

PERFAR collaborates with



Find out more: [www.perfar.eu](http://www.perfar.eu)

